



OAKFIELD



Heath Square, Haywards Heath RH16 1AT

£1,490 Per Calendar Month



Heath Square, Haywards Heath RH16 1AT

Located in the popular Boltro Road area of Haywards Heath is Heath Square this two bedroom first floor flat makes a wonderful home.

When entering the property you are welcomed into the spacious hallway leading to the open plan living space offering a modern kitchen with electric oven and induction hob as well as integrated under counter fridge and washing machine. The apartment offers two spacious double bedrooms. The master is complete with a nicely sized on ensuite. A second well presented bathroom completes the accommodation.

The property is ideally situated less than half a mile from Haywards Heath Railway Station and offers an allocated parking space as well as gas central heating.

Please note:
An annual household income of £44,700 will be required for the affordability criteria of this property.





Lounge/Kitchen

18'4" x 13'1" (5.59 x 3.99)

Bedroom One

10'10" x 9'7" (3.32 x 2.93)

Ensuite

8'7" x 10'10" (2.64 x 3.31)

Bedroom Two

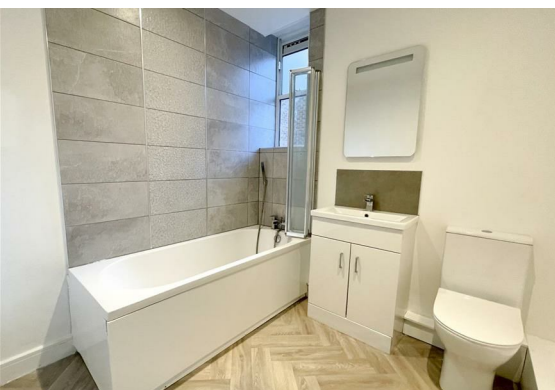
13'9" x 8'6" (4.21 x 2.6)



Bathroom

7'2" x 4'11" (2.20m x 1.51m)

Council Tax Band C - £2,076.97 Per annum



Floor Plan

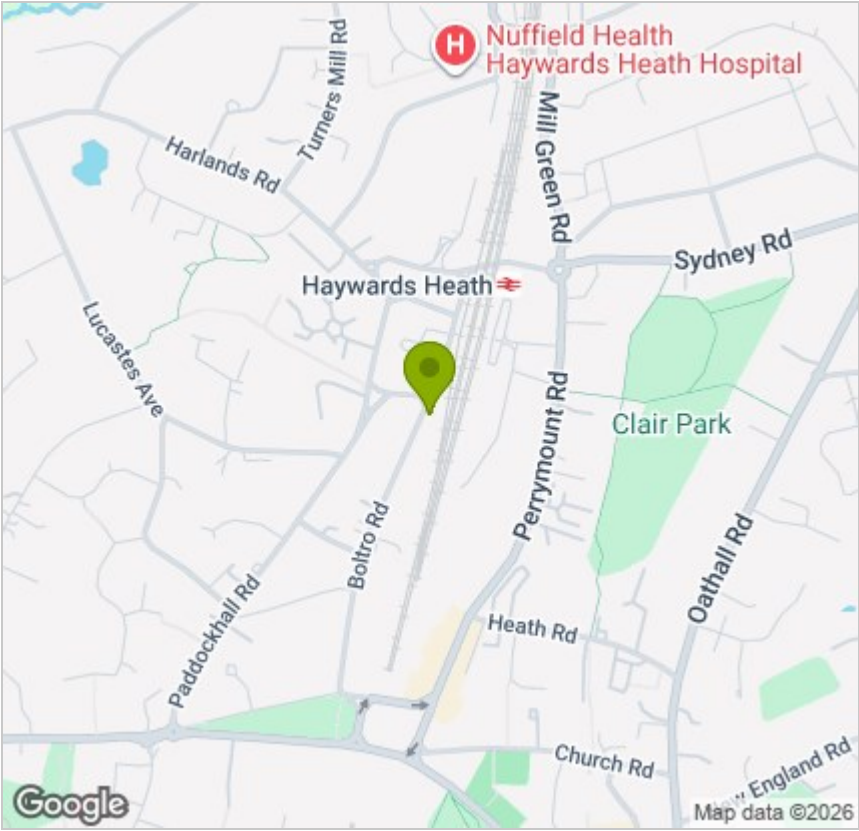


Viewing

Please contact us on 01825 729673 if you wish to arrange a viewing appointment for this property or require further information.

These particulars, whilst believed to be accurate are set out as a general outline only for guidance and do not constitute any part of an offer or contract. Intending purchasers should not rely on them as statements of representation of fact, but must satisfy themselves by inspection or otherwise as to their accuracy. No person in this firms employment has the authority to make or give any representation or warranty in respect of the property.

Area Map



Energy Efficiency Graph

